



Define new luxury homes



Introducing Willow Lane, an exceptional residential enclave where elegance meets tranquility. Set within the embrace of nature's serenity, this distinguished real estate project boasts a collection of over 100 thoughtfully crafted homes, creating a harmonious blend of architectural excellence and refined living.



As a leading residential developer in Ghana, Waylead is committed to building high-quality and modern homes for Ghanaians. From luxurious townhouses to modern apartments, we are always driven to create rich living experiences for you and your family.



COMMUNITY AMENITIES AND FEATURES

- Gated Community
- Police Station
- 24/7 Security Services
- Picnic Garden
- Swimming Pool
- Children's Playground
- Backup Water Supply
- Multi-purpose Sports Court
- Internal Road Networks
- 3 Tier Security System
- Community Parks and Gardens
- Backup Power Supply
- On-site facility management office

Willow Lane

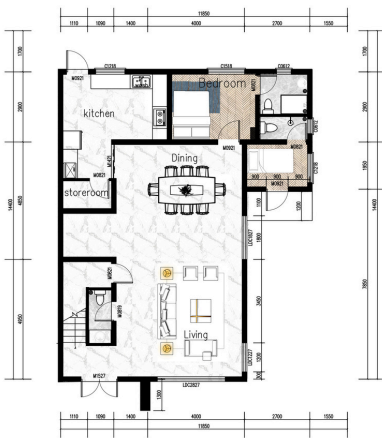
your perfect
home



Type A

300 Sqm 3,229 Sqft
4 BEDROOM DETACHED
TOWNHOUSE

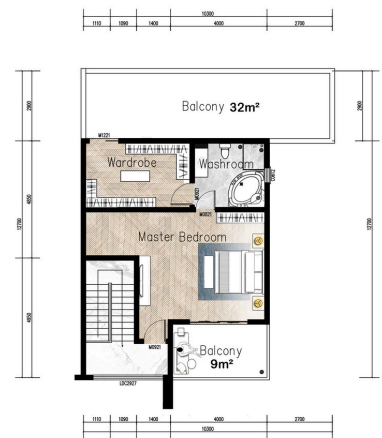
starting from \$307,940
(after 11% off)



GROUND FLOOR 114m²



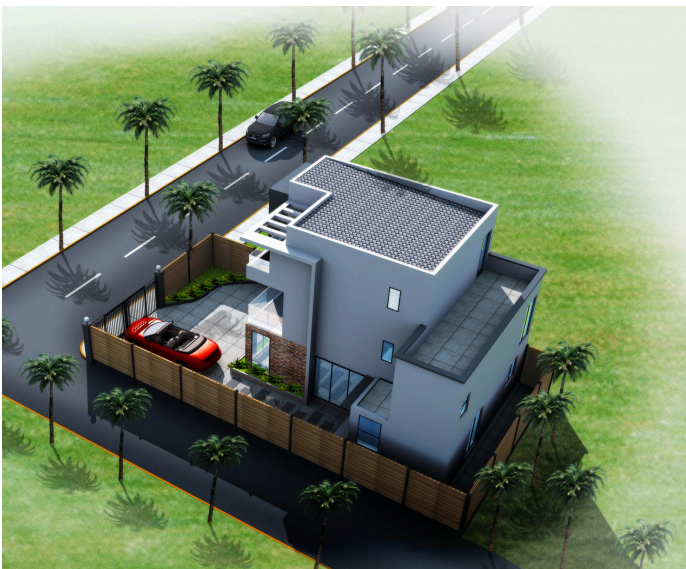
FIRST FLOOR 109m²



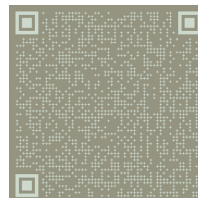
SECOND FLOOR 109m²

DESIGN FEATURES

- Built in Elevator *
- 4 en-suite Bedrooms
- Spacious Living and Dining Area
- 3 Walk-in Closet
- Maid's Quarter
- 1 Terrace
- 1 Balcony
- Gourmet kitchens with engineered stone countertops
- On-site power and water
- State-of-art quality



scan or click for a virtual home
tour



*Mortgages, installment and cash purchase options are available

FINANCING OPTIONS

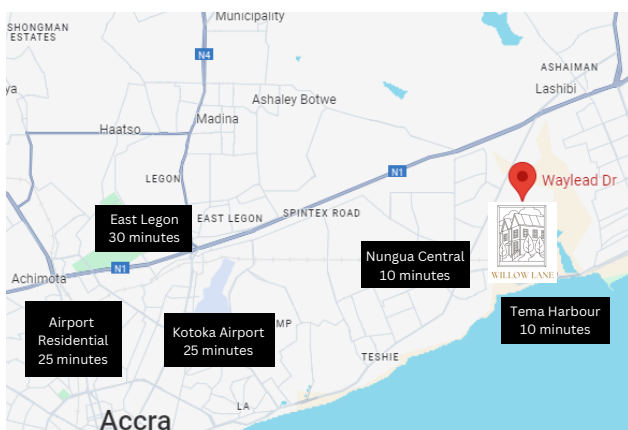
- Outright payment attracts 11% discount (100% payment within 30 days).
- Downpayment attracts up to 8% discount.
- Downpayment starts from 20%.
- Flexible installment payment options with dynamic discount offers.
- Up to 24 months payment option.

down payment	20%	50%	80%	flexible installment \geq 20%
discount	3%	6%	8%	dynamic discount offer

- Convenient local and international partners for easy payment



Payment Plans	Payments
Full payment	100% within 30 days
Installment	20% outright payment + staged payments linked with installment cycle
Mortgage	Minimum of 20% deposit with the balance paid prior handover



Contact Us

- www.waylead.org
- sales@waylead.org
- +233 24 011 1119
- +233 24-011-1119
- +233 50-449-9999

1 Waylead Driv,
Lashibi.

[waylead ghana](https://www.facebook.com/wayleadghana)

[waylead ghana](https://www.instagram.com/wayleadghana)