

Developed by Waylead



WILLOW LANE

Define new luxury homes



Introducing Willow Lane, an exceptional residential enclave where elegance meets tranquility. Set within the embrace of nature's serenity, this distinguished real estate project boasts a collection of over 100 thoughtfully crafted homes, creating a harmonious blend of architectural excellence and refined living.



Waylead

www.waylead.org

As a leading residential developer in Ghana, Waylead is committed to building high-quality and modern homes for Ghanaians. From luxurious townhouses to modern apartments, we are always driven to create rich living experiences for you and your family.



COMMUNITY AMENITIES AND FEATURES

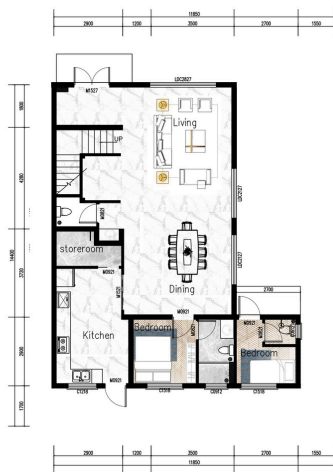
- Gated Community
- Police Station
- 24/7 Security Services
- Picnic Garden
- Swimming Pool
- Children's Playground
- Backup Water Supply
- Multi-purpose Sports Court
- Internal Road Networks
- 3 Tier Security System
- Community Parks and Gardens
- Backup Power Supply
- On-site facility management office



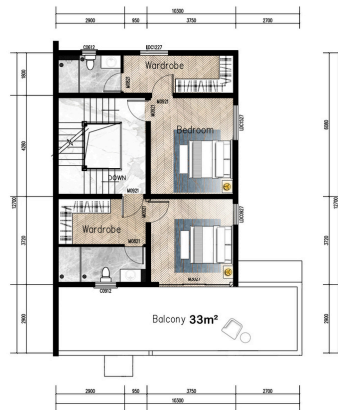
Type B

269 Sqm 2,895 Sqft 4 BEDROOM DETACHED TOWNHOUSE

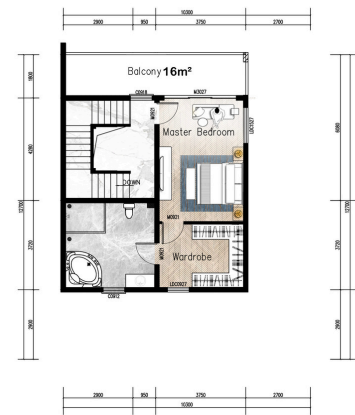
starting from \$276,345
(after 11% off)



GROUND FLOOR 109m²



FIRST FLOOR 109m²



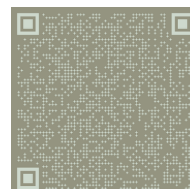
SECOND FLOOR 78m²

DESIGN FEATURES



- Built-in Elevator
- 4 En-suite Bedrooms
- Spacious living and Dining area
- 3 Walk-in closet
- Maid's Quarter
- 1 Terrace
- 1 Balcony
- Gourmet kitchens with engineered stone countertops
- On-site power and water
- State-of-art quality

scan or click for a virtual home
tour



FINANCING OPTIONS

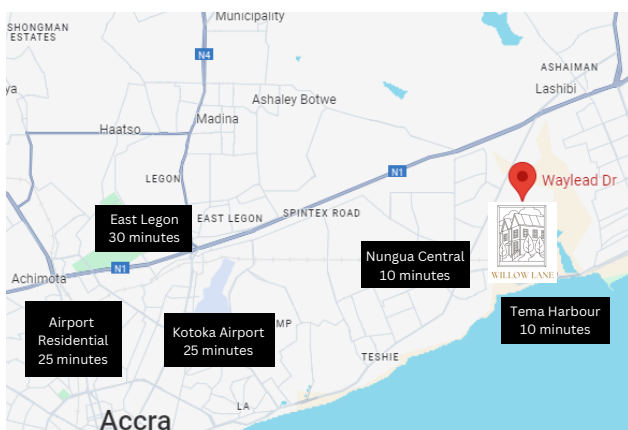
- Outright payment attracts 11% discount (100% payment within 30 days).
- Downpayment attracts up to 8% discount.
- Downpayment starts from 20%.
- Flexible installment payment options with dynamic discount offers.
- Up to 24 months payment option.

down payment	20%	50%	80%	flexible installment \geq 20%
discount	3%	6%	8%	dynamic discount offer

- Convenient local and international partners for easy payment



Payment Plans	Payments
Full payment	100% within 30 days
Installment	20% outright payment + staged payments linked with installment cycle
Mortgage	Minimum of 20% deposit with the balance paid prior handover



Contact Us

- www.waylead.org
- sales@waylead.org
- +233 24 011 1119
- +233 24-011-1119
- +233 50-449-9999

1 Waylead Driv,
Lashibi.

[waylead ghana](https://www.facebook.com/wayleadghana)

[waylead ghana](https://www.instagram.com/wayleadghana)